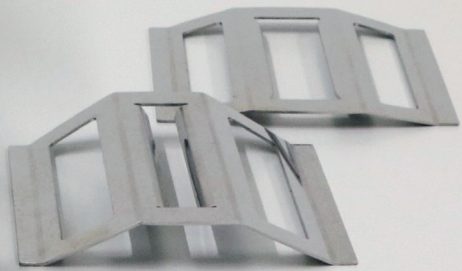


MultiCoder

First and only system for semi-automatic direct print on lab items



Professionalize your lab process with quick and easy machine-readable labeling of lab items



In modern lab processes, traceability and identification of samples, containers and other equipment is of crucial importance. This process is now made easy with Minitube's new **MultiCoder** lab printing system!

Quick & easy

- Perfect semi-automatic workflow, much faster process than manual labeling
- Manually moveable slide and a unique, easy-to-use carrier system ensure a speedy work process
- Quick and easy change of carriers without tools
- Intuitive software for easy control of print process
- MediTEX software interface for easy data import
- Ready-to-print designs for automatic content creation via database
- Individual print layout creation through digital visualization
- Simple operation also for untrained staff

Economic

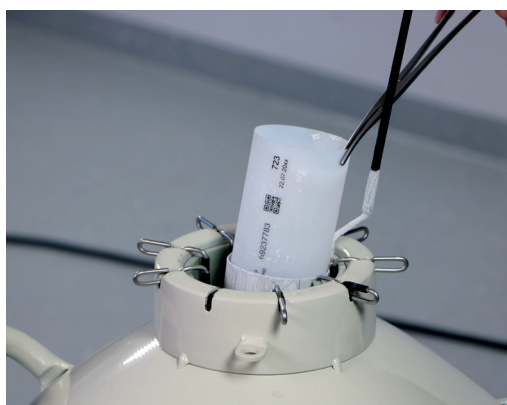
- Wear-free design and long-life ink cartridge for low operating costs
- Quick and easy installation and cleaning
- Maintenance-free
- Compact and space-saving, mobile device

Versatile

- Prints on a whole range of items, such as dishes, tubes, semen straws, goblets and many more
- Labels diverse materials such as plastics, glass, or aluminum
- Standard and customized product carriers allow countless applications

Professional

- Clear and robust machine-readable sample identification - no more mistakes or mix-ups
- Easily readable information even with little printable space - including barcodes, QR codes and logos
- Durable ink dries immediately after print
- Print withstands extreme conditions like liquid nitrogen



name	id	name	id number	collection	disposition	status	specimen per patient	testdate	status	disposition
AM2079	156694HB	V10	69237783	21.08.2014	03.01.2015	1	2000	1	1	23.04.2015
AM2080	1567446L	V10	69238103	26.08.2014	23.01.2015	1	2000	1	1	23.04.2015
AM2081	15667448	V10	69230843	19.08.2014	23.01.2015	1	2000	1	1	23.04.2015
AM2082	15666640	V10	69230806	20.08.2014	23.01.2015	1	2000	1	1	23.04.2015
AM2083	15673450	V10	69230956	25.08.2014	23.01.2015	1	2000	1	1	23.04.2015

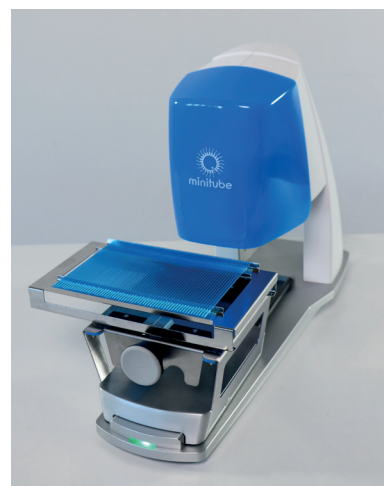


★ Product features

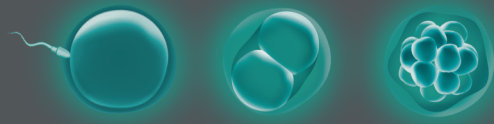
- High resolution inkjet printing
- Print head protection system (avoids drying out of ink)
- Sensor based technique for print activation allows perfect manual workflow
- LED signaling of printer status
- No tools needed for change of carriers
- Upload of MS Excel based data formats possible
- Pre-designed print layouts
- Automatic creation of content for ready-to-print designs via database
- Software installation on central server for remote access and shared layouts is possible

MultiCoder printer 13145/0000

Ink cartridge for MultiCoder 13145/0010



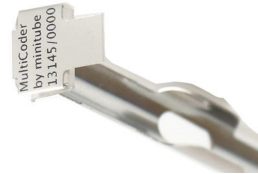
**Countless application possibilities -
which one is yours?**



Customized carriers can be designed upon demand

Standard product carriers

	Carrier Ref.	Carrier for	Product Ref.	Accessories
Goblets	13145/0219	20x Goblet, round, 7.1 mm (<i>multi-print: 1/cycle</i>)	16907/0071	[1]
	13145/0220	15x Goblet, round, 10 mm (<i>multi-print: 1/cycle</i>)	16910/xxxx	[1]
	13145/0221	12x Goblet, round, 13 mm (<i>multi-print: 1/cycle</i>)	16913/xxxx	[1]
	13145/0101	1x Goblet, round, 65 mm	16965/0133	---
Cassettes	13145/0110	1x Flat cassette	16980/xxxx	---
	13145/0111	1x Triangular cassette	16981/01xxx	---
Vials/Tubes	13145/0122	2x Cryovial, 2 ml	/	---
	13145/0124	1x Centrifuge tube, 5 ml	/	---
	13145/0126	1x Centrifuge tube, 15 ml	/	---
	13145/0127	1x Centrifuge tube, 50 ml	14602/0xxx	---
Straws	13145/0201	60x Semen straw, 0.25 ml (<i>multi-print: 4/cycle</i>)	13407/xxxx	[1] [2]
	13145/0202	36x Semen straw, 0.5 ml (<i>multi-print: 3/cycle</i>)	13408/xxxx	[1] [3]
	13145/0203	3x Semen straw, 0.5 ml, 66.5 mm or 90 mm length	19044/xxxx	
Vitrification	13145/0131	3x Kitazato Cryotop® (open system)		---
	13145/0132	3x Biotech Cryolock® and Origio VitriFit™		---
	13145/0133	3x Vitrolife Rapid-i™		---
Dishes	13145/0301	1x 4-well or 5-well culture dish (bottom, top, side)	19021/001	---
	13145/0300	1x Petri dish (all diameters)	19020/xxxx	---
Other	13145/0103	5x Marking label (for goblet canes)	13422/00xx	---
	13145/0105	1x Goblet cane	16965/xxxx	---
	13145/0128	Sperm donation cup	/	---



Accessories

Adapter for multi-print carriers [1] 13145/0200

Loading block

for 0.25 ml straw carrier [2] 13145/0230

for 0.5 ml straw carrier [3] 13145/0231

