

Portable incubator for vials and tubes

Adjustable temperature for optimum incubation conditions

This technologically advanced incubator safely transports biological material like reproductive tissue in tubes, vials or straws at constant temperature. The inner chamber is filled with metal balls to ensure optimal heat transfer and stable positioning of tubes, vials and straws. Users can adjust the temperature from ambient to +50°C with +/- 0.5°C precision.

Portable incubator with adjustable temperature [1]

19180/0003

Accessories

Power bank [2] for mobile use

17048/0410

USB car adapter [3]

17048/0420

to connect to on-board 12-24 V socket

USB mains converter [4]

17048/0430

to connect to mains 110-230 V socket

Base for portable incubator, metal, for a stable footing [5]

17048/0005



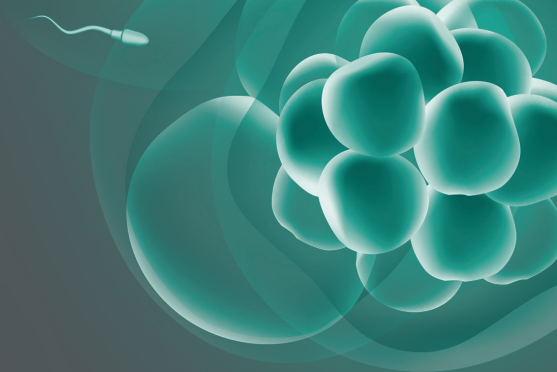
★ Product features

- Highly precise temperature control (+/- 0.5°C)
- Leak-proof screw cap
- No CO₂ gassing (samples must be transported in closed tubes)
- Power bank (Ref. 17048/0410) for mobile use
- Connects to a car battery via USB-C-PD socket, alternatively via an adapter (Ref. 17048/0420)
- For laboratory use, a power supply unit (Ref. 17048/0430) connects to 100-230 V sockets
- Power consumption: 24 W
- Temperature drop when disconnected from power: approx. 4.3°C/h
- Weight (including ball filling): 2.05 kg
- Outer dimensions: height: 215 mm, diameter: 75 mm
- Inner dimensions: chamber height: 145 mm, chamber diameter: 60 mm



Adjustable temperature setting +
Built-in temperature display +
Flexible power supply

Transport kit for vials and tubes



Safe transport over long distances

The carrying case includes a portable incubator, dry battery, and battery charger, enabling safe transport over long distances while maintaining an optimal environment.

(+ Your benefits

- + Allows for shipping of biological material, hand carrying onto train or airplane, transport by car and stationary maintenance under optimum incubation conditions
- + Constant temperature due to highly precise control technology
- + Long-lasting rechargeable battery (up to 20 h)
- + Hygienic environment
- + Heavy-duty, lockable and shockproof carrying case ensures safe transport

Transport kit for vials and tubes
with incubator and battery

19180/2102



(★ Product features

- Outer dimensions: 584 x 267 x 289 mm (L x W x H)
- Capacity of battery: 20 h at >20°C
- Weight of complete kit: 11.5 kg
- Versatile power supply:
 - mobile with battery (connected via USB-C cable)
 - 230 V or 110 V outlet



Transport kit for
vials and tubes
Incubator (19180/0003)
is included